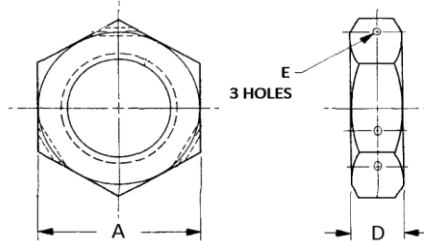


DRILLED NUTS

NAS509

HEX, REGULAR HEIGHT

MATERIAL - 4130 ALLOY STEEL PER AMS-S-6758
 FINISH - CAD TYPE II, CLASS 2 PER AMS-QQ-P-416
 HEAT TREAT- 150 KSI MIN PER AMS2759
 HARDNESS - 34-38 HRC

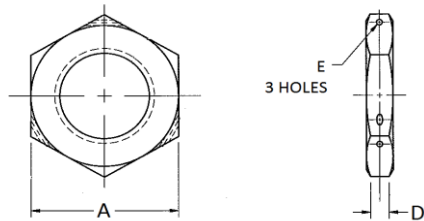


RH THREAD DASH #	LH THREAD DASH #	THREAD SIZE	A DIM	D DIM	E DIA
4	L4	1/4-28 UNJF-3B	0.438	0.188	0.046
5	L5	5/16-24 UNJF-3B	0.500	0.219	
6	L6	3/8-24 UNJF-3B	0.563	0.250	
7	L7	7/16-20 UNJF-3B	0.625	0.281	
8	L8	1/2-20 UNJF-3B	0.750	0.313	

NAS1423

HEX, JAM

MATERIAL - 4130 ALLOY STEEL PER AMS-S-6758
 FINISH - CAD TYPE II, CLASS 2 PER AMS-QQ-P-416
 HEAT TREAT- 150 KSI MIN PER AMS2759
 HARDNESS - 34-38 HRC



RH THREAD DASH #	LH THREAD DASH #	THREAD SIZE	A DIM	D DIM	E DIA
4	4LH	1/4-28 UNJF-3B	0.438	0.125	0.046
5	5LH	5/16-24 UNJF-3B	0.500		
6	6LH	3/8-24 UNJF-3B	0.563		
7	7LH	7/16-20 UNJF-3B	0.625	0.156	
8	8LH	1/2-20 UNJF-3B	0.750		