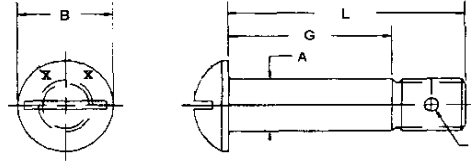


## BOLTS

### AN23 - AN24

#### CLEVIS

MATERIAL - ALLOY STEEL, 4130 OR 8740  
 FINISH - CAD PLATE PER QQ-P-416, TYPE II, CLASS 2  
 HEAT TREAT PER MIL-H-6875  
 HARDNESS - HRC26-32

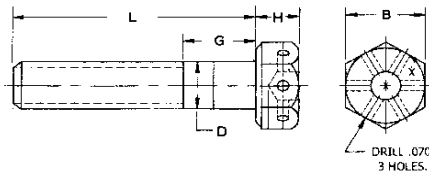


<b>AN23</b>				<b>AN24</b>			
A = .186 B = .375 J = .070				A = .248 B = .500 J = .076			
THREAD 10-32 UNF-3A				THREAD 1/4-28 UNF-3A			
TENSILE 1105 LBS. MIN				TENSILE 2040 LBS. MIN			
SHEAR 2125 LBS. MIN				SHEAR 3680 LBS. MIN			
G GRIP	L LGTH	UN DRILLED	SHANK DRILLED	G GRIP	L LGTH	UN DRILLED	SHANK DRILLED
		DASH#	DASH#			DASH#	DASH#
0.1875	0.5313	8A	8	0.1875	0.5313	8A	8
0.2500	0.5938	9A	9	0.2500	0.5938	9A	9
0.3125	0.6563	10A	10	0.3125	0.6563	10A	10
0.3750	0.7188	11A	11	0.3750	0.7188	11A	11
0.4375	0.7813	12A	12	0.4375	0.7813	12A	12
0.5000	0.8438	13A	13	0.5000	0.8438	13A	13
0.5625	0.9063	14A	14	0.5625	0.9063	14A	14
0.6250	0.9688	15A	15	0.6250	0.9688	15A	15
0.6875	1.0313	16A	16	0.6875	1.0313	16A	16
0.7500	1.0938	17A	17	0.7500	1.0938	17A	17
0.8125	1.1563	18A	18	0.8125	1.1563	18A	18
0.8750	1.2188	19A	19	0.8750	1.2188	19A	19
0.9375	1.2813	20A	20	0.9375	1.2813	20A	20
1.0000	1.3438	21A	21	1.0000	1.3438	21A	21
1.0625	1.4063	22A	22	1.0625	1.4063	22A	22
1.1250	1.4688	23A	23	1.1250	1.4688	23A	23

### MS20073 - MS20074

#### DRILLED HEAD

MATERIAL - ALLOY STEEL, 4130 OR 8740  
 FINISH - CAD PLATE PER QQ-P-416, TYPE II, CLASS 2  
 HEAT TREAT PER MIL-H-6875  
 HARDNESS - HRC26-32



	<b>MS20073</b>		<b>MS20074</b>		
	1032	1/4-28	1024	1/4-20	
THREAD	1032	1/4-28	1024	1/4-20	
B DIM	0.3750	0.4375	0.3750	0.4375	
D DIM	0.1890	0.2490	0.1890	0.2490	
H DIM	0.1875	0.2185	0.1875	0.2185	
TENSILE - LBS. MIN	2210	4080	1800	3360	
SHEAR - LBS. MIN	2125	3680	2125	3680	
G GRIP	L LENGTH	DASH#	DASH#	DASH#	DASH#
0.0620	0.4690	-	04-03	03-03	04-03
0.0620	0.5940	03-04	04-04	03-04	04-04
0.1250	0.6560	03-05	04-05	-	04-05
0.2500	0.7810	03-06	04-06	-	04-06
0.3750	0.9060	-	04-07	-	04-07