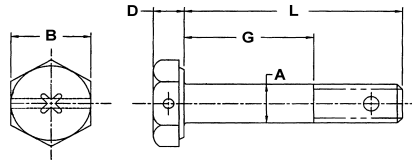


## AIRFRAME BOLTS

### AN3 / AN4 HEX HEAD

MATERIAL - ALLOY STEEL PER NASM6812  
 FINISH - CADMIUM PER QQ-P-416 TYPE II  
 HEAT TREAT - 125,000 - 145,000 PSI, HRC 26-32



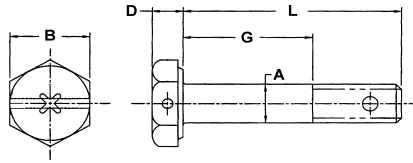
AN3		A = .188 B = .371 D = .125		
THREAD	10-32 UNF-3A			
TENSILE	2210 LBS. MIN			
SHEAR	2125 LBS. MIN			
G GRIP	L LENGTH	UN DRILLED	SHANK DRILLED	HEAD DRILLED
			0.070	0.046
		DASH#	DASH#	DASH#
0.0625	0.4688	3A	3	H3A
0.1250	0.5313	4A	4	H4A
0.2500	0.6563	5A	5	H5A
0.3750	0.7813	6A	6	H6A
0.5000	0.9063	7A	7	H7A
0.6250	1.0313	10A	10	H10A
0.7500	1.1563	11A	11	H11A
0.8750	1.2813	12A	12	H12A
1.0000	1.4063	13A	13	H13A
1.1250	1.5313	14A	14	H14A
1.2500	1.6563	15A	15	H15A
1.3750	1.7813	16A	16	H16A
1.5000	1.9063	17A	17	H17A
1.6250	2.0313	20A	20	H20A
1.7500	2.1563	21A	21	H21A
1.8750	2.2813	22A	22	H22A
2.0000	2.4063	23A	23	H23A
2.1250	2.5313	24A	24	H24A
2.2500	2.6563	25A	25	H25A
2.3750	2.7813	26A	26	H26A
2.5000	2.9063	27A	27	H27A
2.6250	3.0313	30A	30	H30A
2.7500	3.1563	31A	31	H31A
2.8750	3.2813	32A	32	H32A
3.0000	3.4063	33A	33	H33A
3.1250	3.5313	34A	34	H34A
3.2500	3.6563	35A	35	H35A
3.3750	3.7813	36A	36	H36A
3.5000	3.9063	37A	37	H37A
3.6250	4.0313	40A	40	H40A
3.7500	4.1563	41A	41	H41A
3.8750	4.2813	42A	42	H42A
4.0000	4.4063	43A	43	H43A
4.1250	4.5313	44A	44	H44A
4.2500	4.6563	45A	45	H45A
4.3750	4.7813	46A	46	H46A
4.5000	4.9063	47A	47	H47A
4.6250	5.0313	50A	50	H50A
4.7500	5.1563	51A	51	H51A
4.8750	5.2813	52A	52	H52A
5.0000	5.4063	53A	53	H53A
5.1250	5.5313	54A	54	H54A
5.2500	5.6563	55A	55	H55A
5.3750	5.7813	56A	56	H56A
5.5000	5.9063	57A	57	H57A
5.6250	6.0313	60A	60	H60A

AN4		A = .248 B = .433 D = .156		
THREAD	1/4-28 UNF-3A			
TENSILE	4080 LBS. MIN			
SHEAR	3680 LBS. MIN			
G GRIP	L LENGTH	UN DRILLED	SHANK DRILLED	HEAD DRILLED
			0.076	0.046
		DASH#	DASH#	DASH#
0.0625	0.4688	3A	3	H3A
0.0625	0.5313	4A	4	H4A
0.1875	0.6563	5A	5	H5A
0.3125	0.7813	6A	6	H6A
0.4375	0.9063	7A	7	H7A
0.5625	1.0313	10A	10	H10A
0.6875	1.1563	11A	11	H11A
0.8125	1.2813	12A	12	H12A
0.9375	1.4063	13A	13	H13A
1.0625	1.5313	14A	14	H14A
1.1875	1.6563	15A	15	H15A
1.3125	1.7813	16A	16	H16A
1.4375	1.9063	17A	17	H17A
1.5625	2.0313	20A	20	H20A
1.6875	2.1563	21A	21	H21A
1.8125	2.2813	22A	22	H22A
1.9375	2.4063	23A	23	H23A
2.0625	2.5313	24A	24	H24A
2.1875	2.6563	25A	25	H25A
2.3125	2.7813	26A	26	H26A
2.4375	2.9063	27A	27	H27A
2.5625	3.0313	30A	30	H30A
2.6875	3.1563	31A	31	H31A
2.8125	3.2813	32A	32	H32A
2.9375	3.4063	33A	33	H33A
3.0625	3.5313	34A	34	H34A
3.1875	3.6563	35A	35	H35A
3.3125	3.7813	36A	36	H36A
3.4375	3.9063	37A	37	H37A
3.5625	4.0313	40A	40	H40A
3.6875	4.1563	41A	41	H41A
3.8125	4.2813	42A	42	H42A
3.9375	4.4063	43A	43	H43A
4.0625	4.5313	44A	44	H44A
4.1875	4.6563	45A	45	H45A
4.3125	4.7813	46A	46	H46A
4.4375	4.9063	47A	47	H47A
4.5625	5.0313	50A	50	H50A
4.6875	5.1563	51A	51	H51A
4.8125	5.2813	52A	52	H52A
4.9375	5.4063	53A	53	H53A
5.0625	5.5313	54A	54	H54A
5.1875	5.6563	55A	55	H55A
5.3125	5.7813	56A	56	H56A
5.4375	5.9063	57A	57	H57A
5.5625	6.0313	60A	60	H60A



## AIRFRAME BOLTS

### AN5 / AN6 HEX HEAD



MATERIAL - ALLOY STEEL PER NASM6812  
 FINISH - CADMIUM PER QQ-P-416 TYPE II  
 HEAT TREAT - 125,000 - 145,000 PSI, HRC 26-32

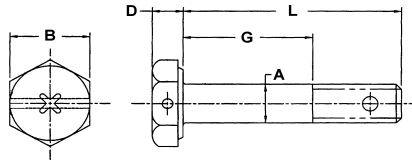
AN5		A = .311 B = .496 D = .188		
THREAD	5/16-24 UNF-3A			
TENSILE	6500 LBS. MIN			
SHEAR	5750 LBS. MIN			
G GRIP	L LENGTH	UN DRILLED	SHANK DRILLED	HEAD DRILLED
		0.076	0.070	0.070
		DASH#	DASH#	DASH#
0.0625	0.5938	4A	4	H4A
0.1875	0.7188	5A	5	H5A
0.3125	0.8438	6A	6	H6A
0.4375	0.9688	7A	7	H7A
0.5625	1.0938	10A	10	H10A
0.6875	1.2188	11A	11	H11A
0.8125	1.3438	12A	12	H12A
0.9375	1.4688	13A	13	H13A
1.0625	1.5938	14A	14	H14A
1.1875	1.7188	15A	15	H15A
1.3125	1.8438	16A	16	H16A
1.4375	1.9688	17A	17	H17A
1.5625	2.0938	20A	20	H20A
1.6875	2.2188	21A	21	H21A
1.8125	2.3438	22A	22	H22A
1.9375	2.4688	23A	23	H23A
2.0625	2.5938	24A	24	H24A
2.1875	2.7188	25A	25	H25A
2.3125	2.8438	26A	26	H26A
2.4375	2.9688	27A	27	H27A
2.5625	3.0938	30A	30	H30A
2.6875	3.2188	31A	31	H31A
2.8125	3.3438	32A	32	H32A
2.9375	3.4688	33A	33	H33A
3.0625	3.5938	34A	34	H34A
3.1875	3.7188	35A	35	H35A
3.3125	3.8438	36A	36	H36A
3.4375	3.9688	37A	37	H37A
3.5625	4.0938	40A	40	H40A
3.6875	4.2188	41A	41	H41A
3.8125	4.3438	42A	42	H42A
3.9375	4.4688	43A	43	H43A
4.0625	4.5938	44A	44	H44A
4.1875	4.7188	45A	45	H45A
4.3125	4.8438	46A	46	H46A
4.4375	4.9688	47A	47	H47A
4.5625	5.0938	50A	50	H50A
4.6875	5.2188	51A	51	H51A
4.8125	5.3438	52A	52	H52A
4.9375	5.4688	53A	53	H53A
5.0625	5.5938	54A	54	H54A
5.1875	5.7188	55A	55	H55A
5.3125	5.8438	56A	56	H56A
5.4375	5.9688	57A	57	H57A
5.5625	6.0938	60A	60	H60A

AN6		A = .373 B = .559 D = .219		
THREAD	3/8-16 UNF-3A			
TENSILE	10100 LBS. MIN			
SHEAR	8280 LBS. MIN			
G GRIP	L LENGTH	UN DRILLED	SHANK DRILLED	HEAD DRILLED
		0.106	0.070	0.070
		DASH#	DASH#	DASH#
0.0625	0.7031	5A	5	H5A
0.1875	0.8281	6A	6	H6A
0.3125	0.9531	7A	7	H7A
0.4375	1.0781	10A	10	H10A
0.5625	1.2031	11A	11	H11A
0.6875	1.3281	12A	12	H12A
0.8125	1.4531	13A	13	H13A
0.9375	1.5781	14A	14	H14A
1.0625	1.7031	15A	15	H15A
1.1875	1.8281	16A	16	H16A
1.3125	1.9531	17A	17	H17A
1.4375	2.0781	20A	20	H20A
1.5625	2.2031	21A	21	H21A
1.6875	2.3281	22A	22	H22A
1.8125	2.4531	23A	23	H23A
1.9375	2.5781	24A	24	H24A
2.0625	2.7031	25A	25	H25A
2.1875	2.8281	26A	26	H26A
2.3125	2.9531	27A	27	H27A
2.4375	3.0781	30A	30	H30A
2.5625	3.2031	31A	31	H31A
2.6875	3.3281	32A	32	H32A
2.8125	3.4531	33A	33	H33A
2.9375	3.5781	34A	34	H34A
3.0625	3.7031	35A	35	H35A
3.1875	3.8281	36A	36	H36A
3.3125	3.9531	37A	37	H37A
3.4375	4.0781	40A	40	H40A
3.5625	4.2031	41A	41	H41A
3.6875	4.3281	42A	42	H42A
3.8125	4.4531	43A	43	H43A
3.9375	4.5781	44A	44	H44A
4.0625	4.7031	45A	45	H45A
4.1875	4.8281	46A	46	H46A
4.3125	4.9531	47A	47	H47A
4.4375	5.0781	50A	50	H50A
4.5625	5.2031	51A	51	H51A
4.6875	5.3281	52A	52	H52A
4.8125	5.4531	53A	53	H53A
4.9375	5.5781	54A	54	H54A
5.0625	5.7031	55A	55	H55A
5.1875	5.8281	56A	56	H56A
5.3125	5.9531	57A	57	H57A
5.4375	6.0781	60A	60	H60A

## AIRFRAME BOLTS

### AN7 / AN8 HEX HEAD

MATERIAL - ALLOY STEEL PER NASM6812  
 FINISH - CADMIUM PER QQ-P-416 TYPE II  
 HEAT TREAT - 125,000 - 145,000 PSI, HRC 26-32



AN7		A = .435 B = .621 D = .250		
THREAD	7/16-20 UNF-3A			
TENSILE	13600 LBS. MIN			
SHEAR	11250 LBS. MIN			
G GRIP	L LENGTH	UN DRILLED	SHANK DRILLED	HEAD DRILLED
		0.106	0.106	0.070
		DASH#	DASH#	DASH#
0.0625	0.7188	5A	5	H5A
0.1875	0.8438	6A	6	H6A
0.3125	0.9688	7A	7	H7A
0.4375	1.0938	10A	10	H10A
0.5625	1.2188	11A	11	H11A
0.6875	1.3438	12A	12	H12A
0.8125	1.4688	13A	13	H13A
0.9375	1.5938	14A	14	H14A
1.0625	1.7188	15A	15	H15A
1.1875	1.8438	16A	16	H16A
1.3125	1.9688	17A	17	H17A
1.4375	2.0938	20A	20	H20A
1.5625	2.2188	21A	21	H21A
1.6875	2.3438	22A	22	H22A
1.8125	2.4688	23A	23	H23A
1.9375	2.5938	24A	24	H24A
2.0625	2.7188	25A	25	H25A
2.1875	2.8438	26A	26	H26A
2.3125	2.9688	27A	27	H27A
2.4375	3.0938	30A	30	H30A
2.5625	3.2188	31A	31	H31A
2.6875	3.3438	32A	32	H32A
2.8125	3.4688	33A	33	H33A
2.9375	3.5938	34A	34	H34A
3.0625	3.7188	35A	35	H35A
3.1875	3.8438	36A	36	H36A
3.3125	3.9688	37A	37	H37A
3.4375	4.0938	40A	40	H40A
3.5625	4.2188	41A	41	H41A
3.6875	4.3438	42A	42	H42A
3.8125	4.4688	43A	43	H43A
3.9375	4.5938	44A	44	H44A
4.0625	4.7188	45A	45	H45A
4.1875	4.8438	46A	46	H46A
4.3125	4.9688	47A	47	H47A
4.4375	5.0938	50A	50	H50A
4.5625	5.2188	51A	51	H51A
4.6875	5.3438	52A	52	H52A
4.8125	5.4688	53A	53	H53A
4.9375	5.5938	54A	54	H54A
5.0625	5.7188	55A	55	H55A
5.1875	5.8438	56A	56	H56A
5.3125	5.9688	57A	57	H57A
5.4375	6.0938	60A	60	H60A

AN8		A = .497 B = .746 D = .281		
THREAD	1/2-20 UNF-3A			
TENSILE	18500 LBS. MIN			
SHEAR	14700 LBS. MIN			
G GRIP	L LENGTH	UN DRILLED	SHANK DRILLED	HEAD DRILLED
		0.106	0.106	0.070
		DASH#	DASH#	DASH#
0.0625	0.8438	6A	6	H6A
0.1875	0.9688	7A	7	H7A
0.3125	1.0938	10A	10	H10A
0.4375	1.2188	11A	11	H11A
0.5625	1.3438	12A	12	H12A
0.6875	1.4688	13A	13	H13A
0.8125	1.5938	14A	14	H14A
0.9375	1.7188	15A	15	H15A
1.0625	1.8438	16A	16	H16A
1.1875	1.9688	17A	17	H17A
1.3125	2.0938	20A	20	H20A
1.4375	2.2188	21A	21	H21A
1.5625	2.3438	22A	22	H22A
1.6875	2.4688	23A	23	H23A
1.8125	2.5938	24A	24	H24A
1.9375	2.7188	25A	25	H25A
2.0625	2.8438	26A	26	H26A
2.1875	2.9688	27A	27	H27A
2.3125	3.0938	30A	30	H30A
2.4375	3.2188	31A	31	H31A
2.5625	3.3438	32A	32	H32A
2.6875	3.4688	33A	33	H33A
2.8125	3.5938	34A	34	H34A
2.9375	3.7188	35A	35	H35A
3.0625	3.8438	36A	36	H36A
3.1875	3.9688	37A	37	H37A
3.3125	4.0938	40A	40	H40A
3.4375	4.2188	41A	41	H41A
3.5625	4.3438	42A	42	H42A
3.6875	4.4688	43A	43	H43A
3.8125	4.5938	44A	44	H44A
3.9375	4.7188	45A	45	H45A
4.0625	4.8438	46A	46	H46A
4.1875	4.9688	47A	47	H47A
4.3125	5.0938	50A	50	H50A
4.4375	5.2188	51A	51	H51A
4.5625	5.3438	52A	52	H52A
4.6875	5.4688	53A	53	H53A
4.8125	5.5938	54A	54	H54A
4.9375	5.7188	55A	55	H55A
5.0625	5.8438	56A	56	H56A
5.1875	5.9688	57A	57	H57A
5.3125	6.0938	60A	60	H60A