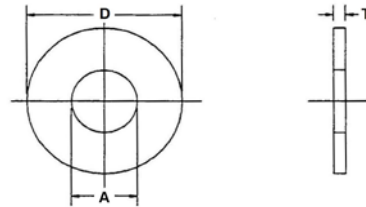


## FLAT WASHERS

### MS15795

FLAT

MATERIAL - 300 SERIES STAINLESS STEEL  
FINISH - PASSIVATE PER ASTM A380

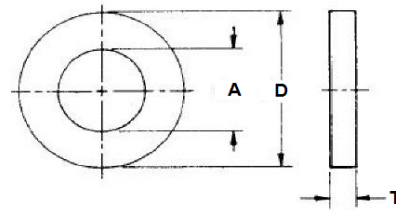


DASH NUMBER	A O.D.	D I.D.	T THK
802	0.094	2.500	0.020
803	0.125	0.250	0.022
805	0.156	0.312	0.035
806	0.156	0.375	0.049
807	0.188	0.375	0.049
808	0.219	0.438	0.049

### NAS620

FLAT, REDUCED O.D.

MATERIAL - CARBON STEEL  
FINISH - CADMIUM PER QQ-P-416, TYPE II, CLASS 2



DASH NUMBER	SCREW SIZE	A I.D.	D O.D.	T THK
4	#4	0.115	0.209	0.016
4L				0.032
6	#6	0.143	0.267	0.016
6L				0.032
8	#8	0.169	0.304	0.016
8L				0.032
10	#10	0.195	0.354	0.032
10L				0.063