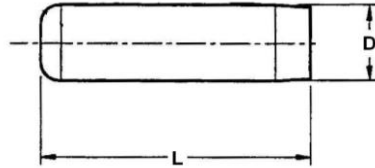


DOWEL AND SPRING PINS

MS16555

DOWEL



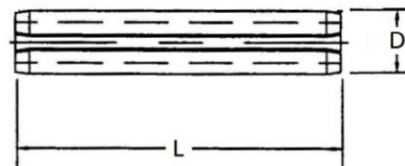
MATERIAL - CRES TYPE 410 OR 416 PER ASTM A582 AND 483
 FINISH - PASSIVATE PER ASTM A380



| DIAMETER | 0.063 | 0.094 | 0.125 |
|--------------------------|--------|--------|--------|
| DOUBLE SHEAR LBS/ MIN | 610 | 1000 | 1800 |
| LENGTH | DASH # | DASH # | DASH # |
| 0.188 | 601 | - | - |
| 0.250 | 602 | - | - |
| 0.313 | - | 617 | - |
| 0.375 | - | 618 | 625 |
| 0.438 | - | 619 | 626 |
| 0.500 | - | 620 | 627 |
| 0.625 | - | - | 628 |
| 0.750 | - | - | 629 |

MS171XXX

SLOTTED



MATERIAL: CRES PER AMS 5506
 FINISH: PASSIVATE PER AMS 2700



| DIAMETER | 0.063 | 0.078 | 0.094 | 0.125 |
|--------------------------|----------|----------|----------|----------|
| DOUBLE SHEAR LBS/ MIN | 300 | 460 | 720 | 1500 |
| LENGTH | DASH # | DASH # | DASH # | DASH # |
| 0.188 | MS171431 | - | - | - |
| 0.250 | MS171432 | MS171462 | MS171492 | - |
| 0.313 | MS171433 | MS171463 | MS171493 | - |
| 0.375 | MS171434 | MS171464 | MS171494 | MS171524 |
| 0.438 | MS171435 | MS171465 | MS171495 | MS171525 |
| 0.500 | MS171436 | MS171466 | MS171496 | MS171526 |
| 0.563 | MS171437 | - | MS171497 | - |
| 0.625 | MS171438 | MS171468 | MS171498 | MS171528 |
| 0.750 | MS171440 | MS171470 | MS171500 | MS171530 |
| 0.875 | - | - | - | MS171532 |
| 1.000 | - | MS171474 | MS171504 | MS171534 |
| 1.250 | - | - | - | MS171536 |