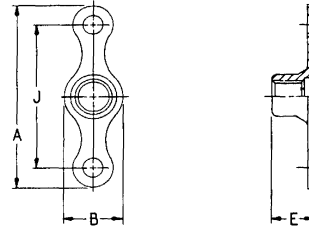


## SELF LOCKING NUTS - PLATE

### MS21047 TWO-LUG

MATERIAL - CARBON / ALLOY STEEL  
 FINISH - CADMIUM PER QQ-P-416 TYPE II  
 (L) - DRY FILM LUBE PER MIL-N-25027



**MS21047**

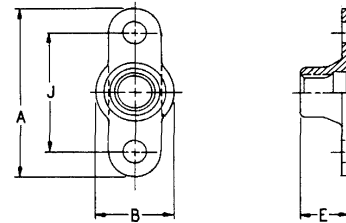


**MS21047L**

NON-DRY FILM LUBE DASH #	DRY FILM LUBE DASH #	THREAD SIZE	A MAX	B	E MAX	J	RIVET HOLE DIA.	AXIAL STRENGTH LBS/MIN
04	L04	4-40	.948	.195-.260	.143	.688	0.098	750
06	L06	6-32		.239-.265	.171	.688		1130
08	L08	8-32		.277-.297	.250	.688		1720
3	L3	10-32	.308-.328	.688	2460			
4	L4	1/4-28	1.260	.375-.414	.281	1.000	0.130	4580
5	L5	5/16-24	1.292	.485-.505	.328	1.000		7390
6	L6	3/8-24	1.292	.594-.614	.344	1.000		11450

### MS21069 TWO-LUG - REDUCED RIVET SPACING

MATERIAL - CARBON / ALLOY STEEL  
 FINISH - CADMIUM PER QQ-P-416 TYPE II  
 (L) - DRY FILM LUBE PER MIL-N-25027



**MS21069**



**MS21069L**

NON-DRY FILM LUBE DASH #	DRY FILM LUBE DASH #	THREAD SIZE	A MAX	B	E MAX	J	RIVET HOLE DIA.	AXIAL STRENGTH LBS/MIN
04	L04	4-40	.630	.140-.260	.143	.406	0.098	750
06	L06	6-32	.661	.195-.265	.171	.437		1130
08	L08	8-32	.692	.230-.297	.250	.468		1720
3	L3	10-32	.724	.298-.328	.500	2460		
4	L4	1/4-28	.786	.380-.414	.281	.562	0.130	4580
5	L5	5/16-24	1.006	.475-.505	.328	.718		7390
6	L6	3/8-24	1.116	.580-.614	.344	.828		11450