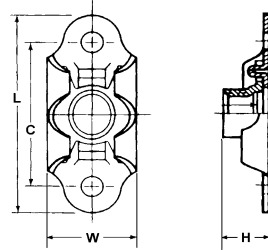


## SELF LOCKING NUTS - PLATE

### MS21059

TWO-LUG - FLOATING

MATERIAL - CARBON / ALLOY STEEL  
 FINISH - CADMIUM PER QQ-P-416 TYPE II  
 (L) - DRY FILM LUBE PER MIL-N-25027



MS21059



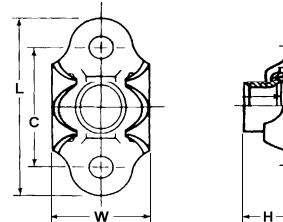
MS21059L

NON-DRY FILM LUBE DASH #	DRY FILM LUBE DASH #	THREAD SIZE	L MAX	W	H MAX	C	RIVET HOLE DIA.	AXIAL STRENGTH LBS/MIN
04	L04	4-40	.948	.290-.416	.175	.688	.098	750
06	L06	6-32			.203			1130
08	L08	8-32			.250			1720
3	L3	10-32	1.292	.350-.516	.281	.130		2460
4	L4	1/4-28			.328			4580
5	L5	5/16-24			.475-.680	.344		7390
6	L6	3/8-24					11450	

### MS21075

TWO-LUG - FLOATING, REDUCED RIVET SPACING

MATERIAL - CARBON / ALLOY STEEL  
 FINISH - CADMIUM PER QQ-P-416 TYPE II  
 (L) - DRY FILM LUBE PER MIL-N-25027



MS21075



MS21075L

NON-DRY FILM LUBE DASH #	DRY FILM LUBE DASH #	THREAD SIZE	L MAX	W	H MAX	C	RIVET HOLE DIA.	AXIAL STRENGTH LBS/MIN
04	L04	4-40	.651	.275-.315	.143	.406	.098	750
06	L06	6-32	.682	.290-.357	.171	.437		1130
08	L08	8-32	.707	.290-.367	.250	.468		1720
3	L3	10-32	.739	.290-.416	.500	.562		2460
4	L4	1/4-28	.801	.350-.500	.281			4580
5	L5	5/16-24	1.010	.412-.581	.328			.718