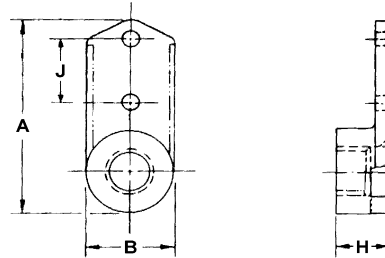


## SELF LOCKING NUTS - PLATE

### MS21051 ONE-LUG

MATERIAL - CARBON / ALLOY STEEL 125 KSI  
 FINISH - CADMIUM PER QQ-P-416 TYPE II  
 (L) - DRY FILM LUBE PER MIL-N-25027



MS21051

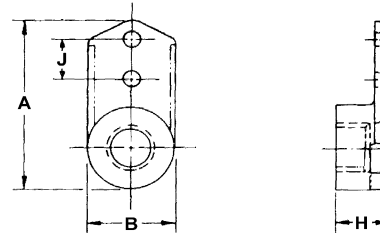


MS21051L

NON-DRY FILM LUBE DASH #	DRY FILM LUBE DASH #	THREAD SIZE	A MAX	B	H MAX	J	RIVET HOLE DIA.	AXIAL STRENGTH LBS/MIN
06	L06	6-32	.935	.239-.297	.171	.312	.098	1130
08	L08	8-32		.277-.297				1720
3	L3	10-32	.950	.308-.328	.250			2460
4	L4	1/4-28	.993	.375-.414	.281			4580

### MS21071 ONE-LUG - REDUCED RIVET SPACING

MATERIAL - CARBON / ALLOY STEEL 125 KSI  
 FINISH - CADMIUM PER QQ-P-416 TYPE II  
 (L) - DRY FILM LUBE PER MIL-N-25027



MS21071



MS21071L

NON-DRY FILM LUBE DASH #	DRY FILM LUBE DASH #	THREAD SIZE	A MAX	B	H MAX	J	RIVET HOLE DIA.	AXIAL STRENGTH LBS/MIN
04	L04	4-40	.667	.140-.260	.143	.219	.098	750
06	L06	6-32	.684	.195-.265	.171			1130
08	L08	8-32	.715	.230-.297	.250			1720
3	L3	10-32	.745	.298-.328	.250			2460
4	L4	1/4-28	.822	.380-.414	.281			4580



