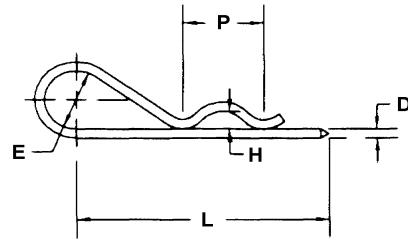


SAFETY CLIPS & PINS

AA55487 / AN415

LOCK PIN

MATERIAL - CRES STL TYPE 316 SPRING WIRE
 PER ASTM A313
 FINISH - PASSIVATE PER QQ-P-35

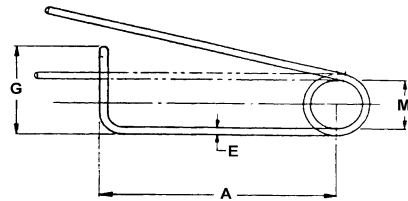


| DASH # | D | E | H | L | P |
|--------|-------|-------|-------|-------|-------|
| 2 | 0.080 | 0.375 | 0.188 | 1.938 | 0.750 |
| 3 | 0.030 | 0.094 | 0.047 | 0.594 | 0.188 |
| 4 | 0.059 | 0.250 | 0.094 | 1.125 | 0.375 |
| 5 | 0.073 | 0.313 | 0.094 | 1.438 | 0.500 |

AA55488 / AN416

SAFETY PIN

MATERIAL - CRES STL TYPE 316 SPRING WIRE
 FINISH - PASSIVATE PER QQ-P-35

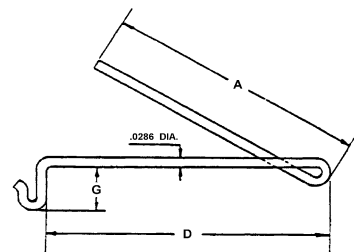


| DASH # | A | E | G | M |
|--------|-------|-------|-------|-------|
| 1 | 1.062 | 0.051 | 0.296 | 0.156 |
| 2 | 0.750 | 0.041 | 0.250 | |

MS21256

TURNBUCKLE CLIP

MATERIAL - CRES STL TYPE 316 SPRING WIRE
 FINISH - PASSIVATE PER QQ-P-35



| DASH # | DIA | A | D | G |
|--------|--------|-------|-------|-------|
| 1 | 0.0286 | 0.965 | 1.075 | 0.300 |
| 2 | 0.0286 | 1.875 | 1.955 | 0.315 |
| 3 | 0.0286 | 2.045 | 2.015 | 0.430 |