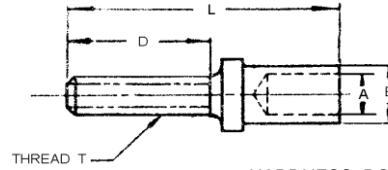


ROD ENDS & CLEVISES

AN490

ROD END, THREADED

MATERIAL - 4130 ALLOY STEEL PER MIL-S-6758
 FINISH - CAD PER QQ-P-416 TYPE II, CLASS 2



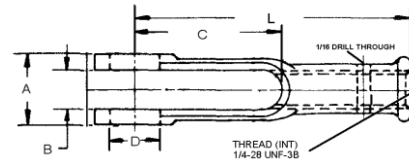
HARDNESS: RC25-30

DASH NUMBER	THREAD T	TUBE SIZE	A	B	D	L
HT5P	1/4-28	5/16	0.125	0.242	0.937	1.75
HT6P	1/4-28	3/8	0.185	0.305		
HT8P	1/4-28	1/2	0.281	0.430	1.000	1.812
HT10P	5/16-24	5/8	0.375	0.555		
HT11P	5/16-24	3/4	0.500	0.680		
HT14P	3/8-24					
HT15P	5/16-24	1/2	0.250	0.312		
HT16P	3/8-24					

MS27975

CLEVIS, ROD END - ADJUSTING

MATERIAL - 4130 ALLOY STEEL PER AMS6758
 FINISH - CAD PER AMS-QQ-P-416 TYPE II, CLASS 3



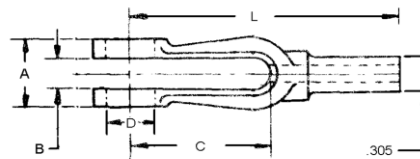
MAT. TENSILE: 90,000 PSI

DASH NUMBER	ULT. MIN. AXIAL LOAD	A	B	C	D	L
1	3800 LBS	0.500	0.266	1.000	0.250	1.875
2	2850 LBS	0.312	0.141			
3	4700 LBS	0.500	0.266		0.188	
4	3500 LBS	0.312	0.141			

MS27976

CLEVIS, ROD END - PLAIN

MATERIAL - 4130 ALLOY STEEL PER MIL-S-6758
 FINISH - CAD PER QQ-P-416 TYPE II, CLASS 3



MAT. TENSILE: 90,000 PSI

DASH NUMBER	ULT. MIN. AXIAL LOAD	A	B	C	D	L
1	3800 LBS	0.500	0.266	1.000	0.250	1.875
2	2850 LBS	0.312	0.141			
3	4700 LBS	0.500	0.266		0.188	
4	3500 LBS	0.312	0.141			