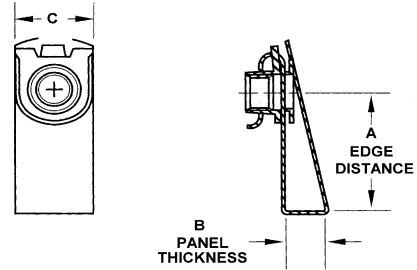


CLIP & INSTRUMENT NUTS

SL RC CLIP NUTS FLOATING

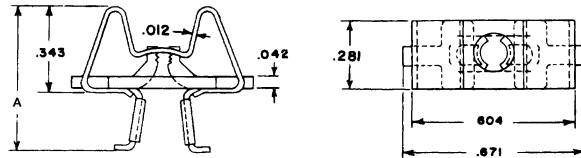
MATERIAL - STEEL
FINISH - CLIP, CAD PER QQ-P-416 TYPE II
NUT, CAD II PLUS DRY FILM LUBE



PART NUMBER	THREAD SIZE	A DIM	B DIM	C DIM
SL231-06-1-281	6-32	0.281	.030 - .062	0.406
SL211-08-1SP9	8-32	0.375	.020 - .125	0.437
RC500-8-3	10-32	0.500	.020 - .160	0.406

MS33737 INSTRUMENT NUT

MATERIAL - CAGE, PHOSPHOR BRONZE
NUT, HALF-HARD BRASS
FINISH - CAD PER QQ-P-416 TYPE II



MS DASH	NAS 487-	THREAD SIZE	A DIM	PANEL THICKNESS
9C	13	6-32	0.438	0.062
10C	14		0.469	0.093
11C	15		0.500	0.125
12C	16		0.562	0.187
13C	17		0.625	0.250
14C	18		0.688	0.312
15C	20		0.750	0.375
16C	21		OVER .375	