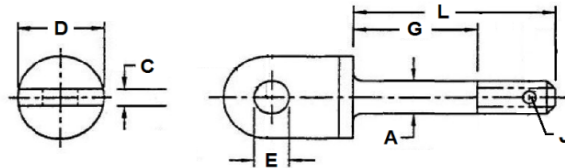


BOLTS

AN42 - AN43

EYE

MATERIAL - ALLOY STEEL, 4130 OR 8740
 FINISH - CAD PLATE PER QQ-P-416, TYPE II, CLASS 2
 HEAT TREAT PER MIL-H-6875
 HARDNESS - HRC26-32

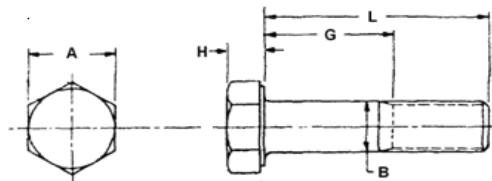


AN42				AN43			
A = .186 C = .094 J = .070				A = .246 C = .125 J = .076			
HEAD DIA. 0.438				HEAD DIA. 0.500			
THREAD 10-32 UNF-3A				THREAD 1/4-28 UNF-3A			
TENSILE 1150 LBS. MIN				TENSILE 2450 LBS. MIN			
SHEAR 4250 LBS. MIN				SHEAR 7360 LBS. MIN			
G	L	UN DRILLED	SHANK DRILLED	G	L	UN DRILLED	SHANK DRILLED
GRIP	LGTH	DASH#	DASH#	GRIP	LGTH	DASH#	DASH#
0.125	0.531	4A	4	0.063	0.531	4A	4
0.250	0.656	5A	5	0.188	0.656	5A	5
0.375	0.781	6A	6	0.313	0.781	6A	6
0.500	0.906	7A	7	0.438	0.906	7A	7
0.625	1.031	10A	10	0.563	1.031	10A	10
0.750	1.156	11A	11	0.688	1.156	11A	11
0.875	1.281	12A	12	0.813	1.281	12A	12
1.000	1.406	13A	13	0.938	1.406	13A	13
1.125	1.531	14A	14	1.063	1.531	14A	14
1.250	1.656	15A	15	1.188	1.656	15A	15
1.375	1.781	16A	16	1.313	1.781	16A	16
1.500	1.906	17A	17	1.438	1.906	17A	17
1.625	2.031	20A	20	1.563	2.031	20A	20
1.750	2.156	21A	21	1.688	2.156	21A	21
1.875	2.281	22A	22	1.813	2.281	22A	22
2.000	2.406	-	-	1.938	2.406	23A	23
2.125	2.531	-	-	2.063	2.531	24A	24

MS9489

HEX HEAD

MATERIAL - A-286 CRES. PER AMS 5731
 FINISH - PASSIVATE
 TENSILE - 2600 PSI MIN



MS9489		
THREAD	1032	
B DIM	0.1875	
A DIM	0.3750	
H DIM	0.1250	
TENSILE - LBS. MIN	2210	
SHEAR - LBS. MIN	2125	
G	L	DASH#
GRIP	LENGTH	
0.082	0.375	04
	0.438	05
	0.500	06
	0.563	07
	0.625	08
0.688	09	