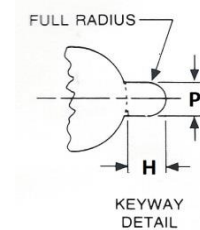
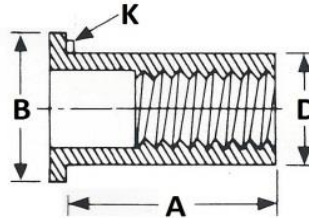


RIVET NUTS

NAS1329 OPEN END, FLAT HEAD

MATERIAL - ALUMINUM ALLOY 5056-H2
FINISH - ANODIZE PER MIL-A-8625 TYPE II, CLASS 1

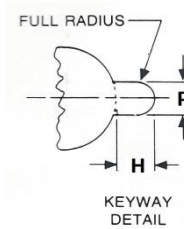
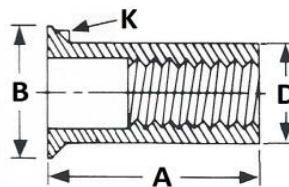


KEYLESS DASH#	KEYED (K) DASH#	THREAD SIZE	A	B	D
A06-75	A06K75	6-32	0.438	0.325	0.189
A06-120	A06K120		0.500		
A08-75	A08K75	8-32	0.438	0.357	0.221
A08-120	A08K120		0.500		
A3-80	A3K80	10-32	0.531	0.406	0.250

DIA	THREAD STRENGTH LBS/MIN	INSTALL HOLE SIZE		KEYWAY DIMENSIONS	
		MIN	MAX	P +.003 -0	H +/- .001
06	650	0.189	0.193	0.062	0.057
08	800	0.221	0.226		
3	1070	0.250	0.256		

NAS1330 OPEN END, COUNTERSUNK HEAD

MATERIAL - ALUMINUM ALLOY 5056-H2
FINISH - ANODIZE PER MIL-A-8625 TYPE II, CLASS 1



KEYLESS DASH#	KEYED (K) DASH#	THREAD SIZE	A	B	D
A06-106	A06K106	6-32	0.500	0.323	0.189
A08-106	A08K106	8-32		0.355	0.221

DIA	THREAD STRENGTH LBS/MIN	INSTALL HOLE SIZE		KEYWAY DIMENSIONS	
		MIN	MAX	P +.003 -0	H +/- .001
06	650	0.189	0.193	0.062	0.057
08	800	0.221	0.226		
3	1070	0.250	0.256		