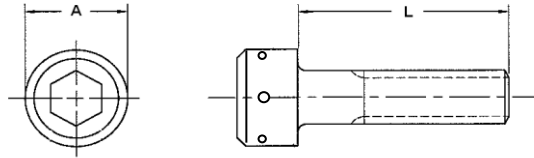




## SOCKET CAP SCREWS - ALLOY

### NAS1351 / NAS1352 SOCKET HEAD CAP SCREW

MATERIAL - ALLOY STEEL PER ASTM A574  
FINISH - CAD TYPE II, CLASS 2 PER QQ-P-416



UNDRILLED

	NAS1352	NAS1352	NAS1352	NAS1351	NAS1351
<b>THREAD</b>	<b>4-40</b>	<b>6-32</b>	<b>8-32</b>	<b>10-32</b>	<b>1/4-28</b>
<b>A</b>	0.183	0.226	0.270	0.312	0.375
<b>H</b>	0.109	0.138	0.164	0.190	0.250
<b>J</b>	0.094	0.109	0.141	0.156	0.188
<b>MIN BREAKING STRENGTH (LBS)</b>	1090	1640	2520	3600	6550
<b>LENGTH (L)</b>	<b>DASH#</b>	<b>DASH#</b>	<b>DASH#</b>	<b>DASH#</b>	<b>DASH#</b>
0.250	04-4	06-4			
0.375	04-6	06-6	08-6	3-6	4-6
0.500	04-8	06-8	08-8	3-8	4-8
0.625	04-10	06-10	08-10	3-10	4-10
0.750	04-12	06-12	08-12	3-12	4-12
0.875		06-14	08-14	3-14	4-14
1.000		06-16	08-16	3-16	4-16
1.250			08-20	3-20	4-20
1.500			08-24	3-24	4-24



DRILLED (H)

	NAS1352	NAS1352	NAS1352	NAS1351	NAS1351
<b>THREAD</b>	<b>4-40</b>	<b>6-32</b>	<b>8-32</b>	<b>10-32</b>	<b>1/4-28</b>
<b>A</b>	0.183	0.226	0.270	0.312	0.375
<b>H</b>	0.109	0.138	0.164	0.190	0.250
<b>J</b>	0.094	0.109	0.141	0.156	0.188
<b>DRILLED HOLE</b>	0.033	0.033	0.044	0.044	0.044
<b>MIN BREAKING STRENGTH (LBS)</b>	1090	1640	2520	3600	6550
<b>LENGTH</b>	<b>DASH#</b>	<b>DASH#</b>	<b>DASH#</b>	<b>DASH#</b>	<b>DASH#</b>
0.250	04H4	06H4			
0.375	04H6	06H6	08H6	3H6	4H6
0.500	04H8	06H8	08H8	3H8	4H8
0.625		06H10	08H10	3H10	4H10
0.750			08H12	3H12	4H12
0.875			08H14	3H14	4H14
1.000			08H16	3H16	4H16
1.250			08H20	3H20	
1.500			08H24	3H24	